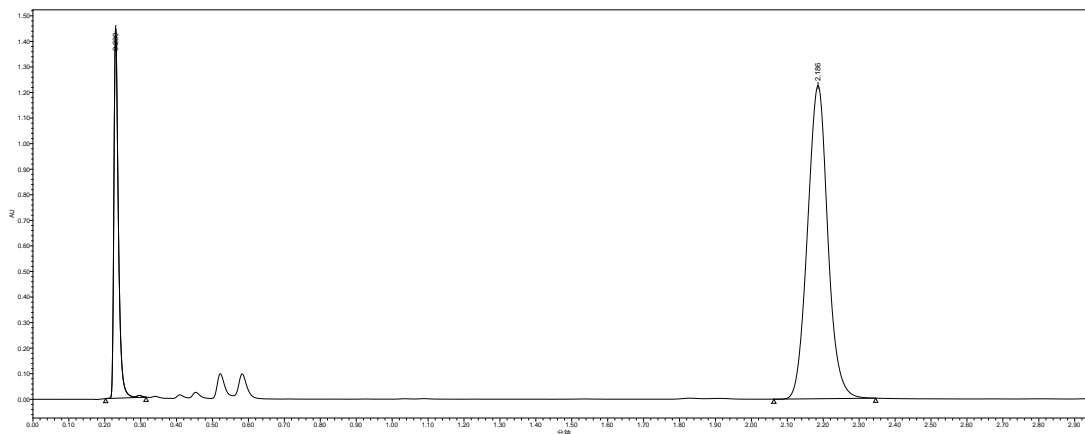


HPLC COLUMN TEST SUMMARY

| | | | |
|----------------|----------------------------|-------------------|----------------------|
| Catalog No: | HP-BX25-2105 | Mobile Phase: | ACN:H2O=50:50 |
| Serial No: | H22061206 | Flow Rate: | 0.6ml/min |
| Batch No: | H02025-J06-011001 | Temperature: | Ambient |
| Bulk Material: | Hungpu XBT C18 2.5 μ m | Detector: | 254nm |
| Dimensions: | 50*2.1mm | Injection Volume: | 1 μ l |
| Pressure: | 5232Psi | Sample: | Acetone、Acenaphthene |



| Item | Sample | Ret Time (min) | USP Tailing (As) | Efficiency (N/m) |
|------|--------------|-------------------|---------------------|---------------------|
| 1 | Acetone | 0.23 | 1.52 | 35400 |
| 2 | Acenaphthene | 2.18 | 1.05 | 147960 |

Test Result: Qualified

