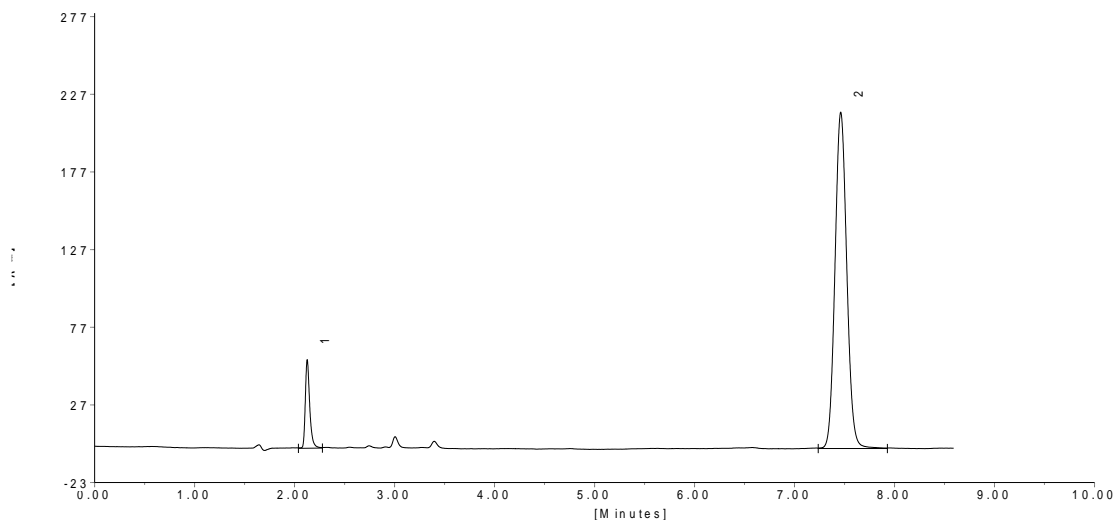


## HPLC COLUMN TEST SUMMARY

|                |                            |                   |                      |
|----------------|----------------------------|-------------------|----------------------|
| Catalog No:    | HP-BX35-4615               | Mobile Phase:     | ACN:H2O=70:30        |
| Serial No:     | H22052802                  | Flow Rate:        | 0.8ml/min            |
| Batch No:      | H02035-J06-011001          | Temperature:      | Ambient              |
| Bulk Material: | Hungpu XBT C18 3.5 $\mu$ m | Detector:         | 254nm                |
| Dimensions:    | 150*4.6mm                  | Injection Volume: | 5 $\mu$ l            |
| Pressure:      | 7.1Mpa                     | Sample:           | Acetone、Acenaphthene |



| Item | Sample       | Ret Time<br>(min) | USP Tailing<br>(As) | Efficiency<br>(N/m) |
|------|--------------|-------------------|---------------------|---------------------|
| 1    | Acetone      | 2.12              | 1.38                | 85563               |
| 2    | Acenaphthene | 7.46              | 1.09                | 129866              |

Test Result: Qualified

